

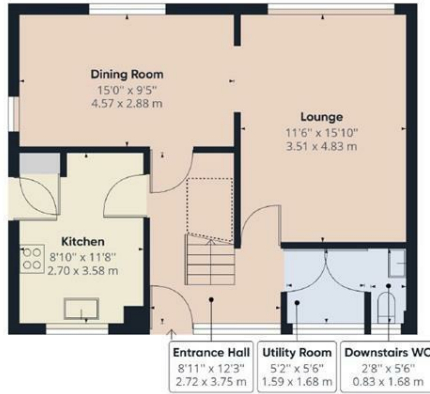


33 Chattenden Lane, Chattenden, Rochester, Kent, ME3 8LE

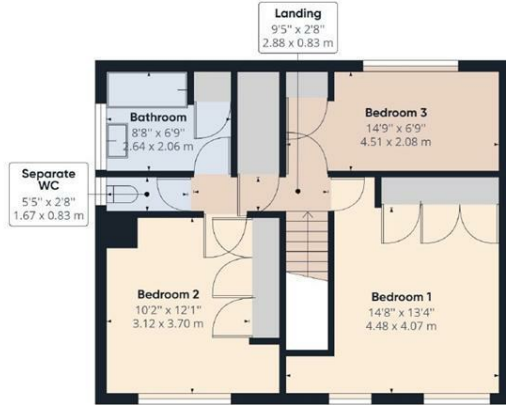
GUIDE PRICE £350,000 - £375,000. Located along a no through private residents road is this larger than average 3 bedroom semi detached house. This particular plot is nicely tucked away from the road and is pleasing to the eye at the very first glance. On entering through the storm porch you have the airy entrance hall with the stairs leading to the first floor. Downstairs accommodation comprises of a white fitted kitchen, dining room with an opening to the separate lounge. The lounge can also be accessed direct from the hallway. A much added bonus is a utility room and a downstairs WC. The rear garden has easy access from multiple rooms on the ground floor. Located upstairs are the 3 double bedrooms, good size family bathroom and separate WC. Externally there is a front garden with side access to the large rear garden and offers a patio and good size lawn area with an established apple tree. The garden offers the perfect space for all your families needs and would be excellent for entertaining guests and also boasts a summer house/garden cabin. The garage is located en-block with an up and over door and the home also comes with a parking space. Being mostly neutrally decorated, we strongly recommend an internal viewing as homes in this area of this size are rarely available. The local primary school is within walking distance, offers good transport links via road and is located on a bus route.

- SEMI RURAL LOCATION
- GARAGE EN-BLOC
- PARKING SPACE
- LARGE FLAT REAR GARDEN
- UTILITY ROOM
- DOWNSTAIRS WC/CLOAKROOM
- STORM PORCH
- 3 DOUBLE BEDROOMS
- UPSTAIRS FAMILY BATHROOM WITH A SEPARATE WC
- GARDEN CABIN

£350,000



Ground Floor Building 1



Floor 1 Building 1

Approximate total area⁽¹⁾

1145.05 ft²
106.38 m²

Reduced headroom

14.01 ft²
1.30 m²

(1) Excluding balconies and terraces

Reduced headroom (below 1.5m/4.92ft)

While every attempt has been made to ensure accuracy, all measurements are approximate, not to scale. This floor plan is for illustrative purposes only.

GIRAFFE360

